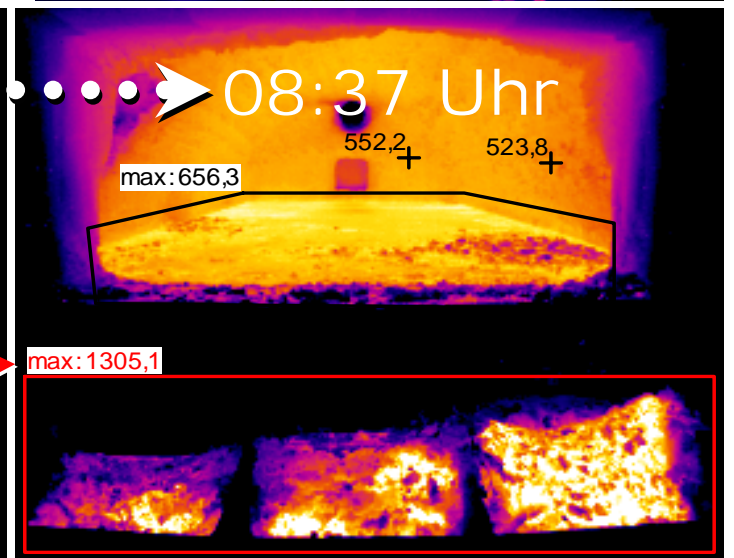
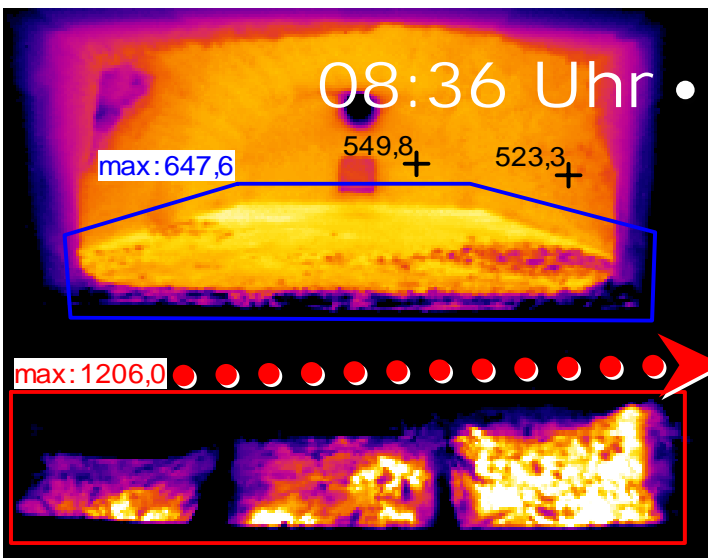
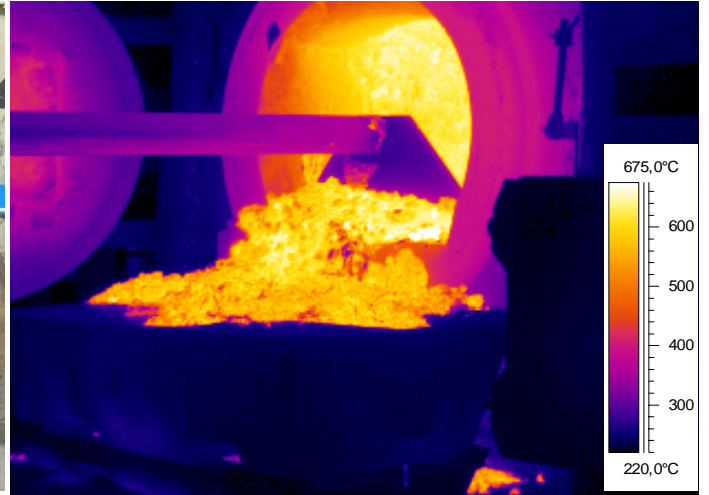
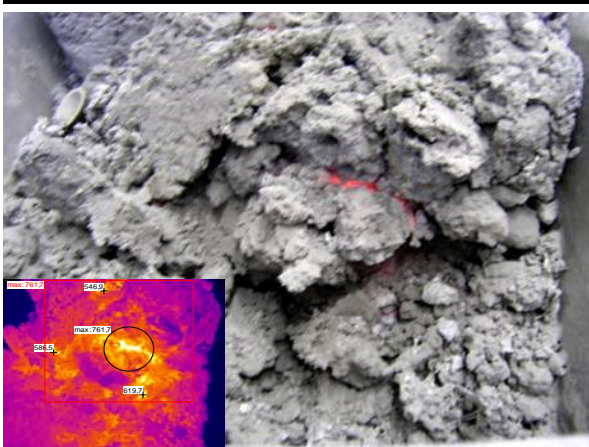
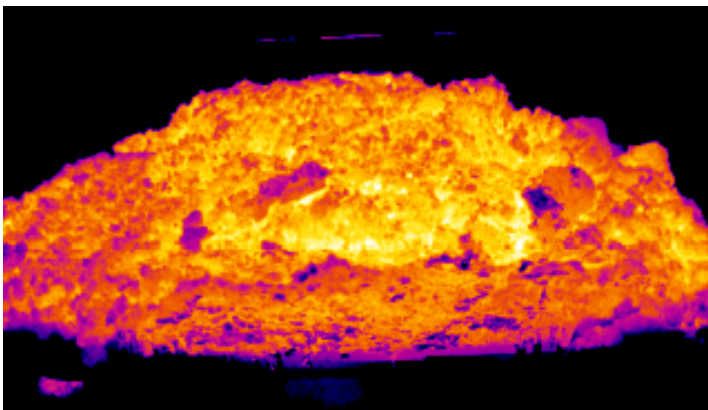


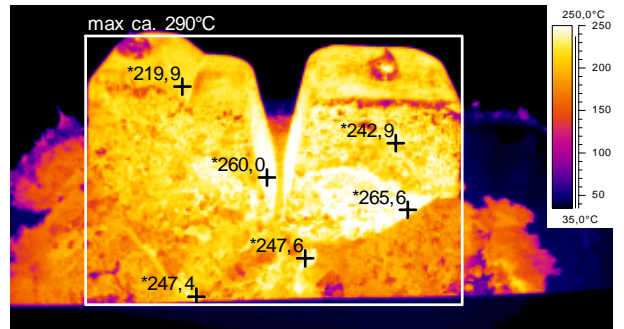
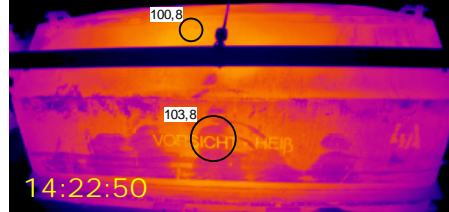
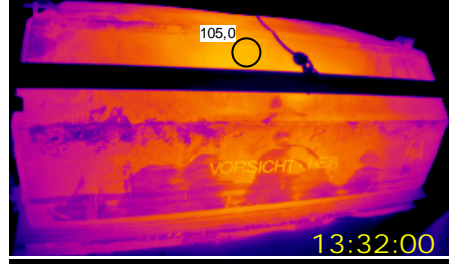
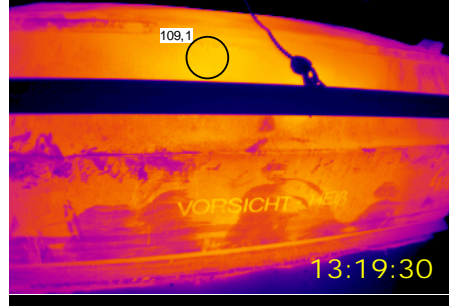
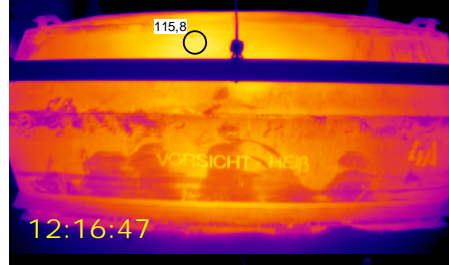
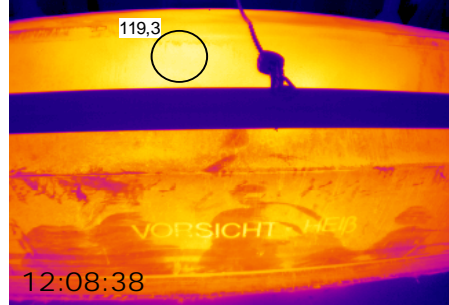
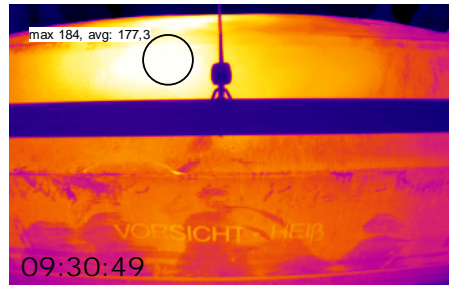
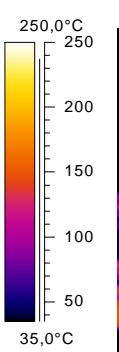
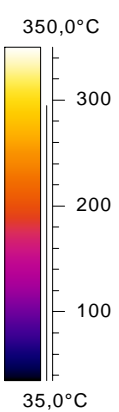
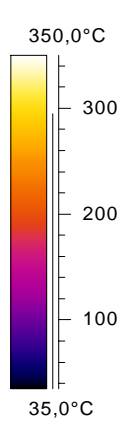
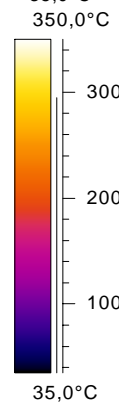
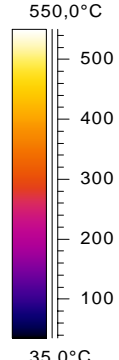
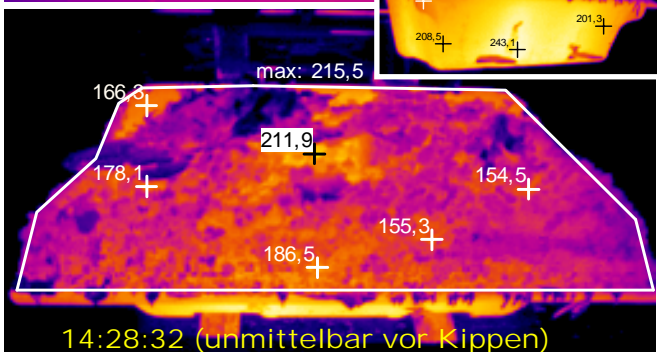
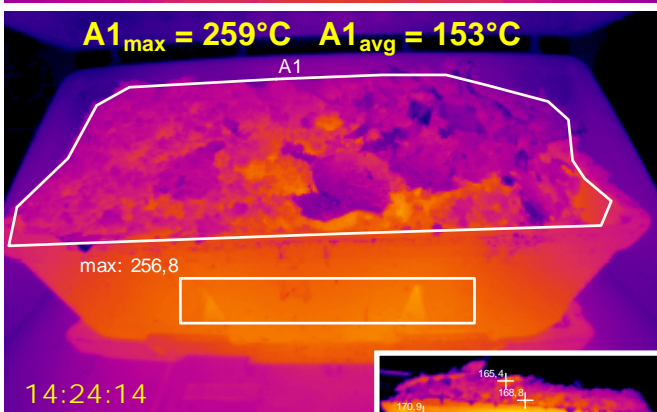
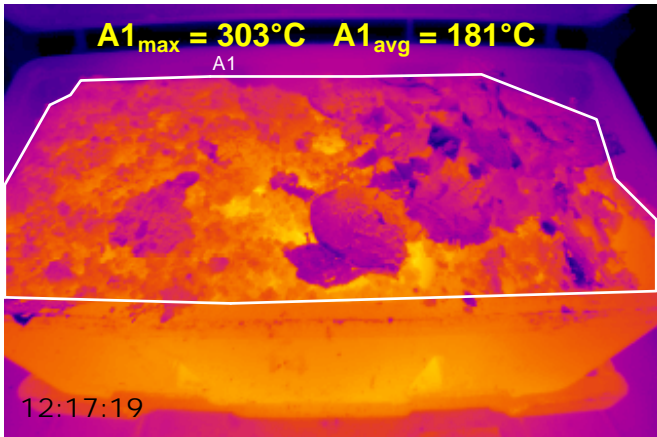
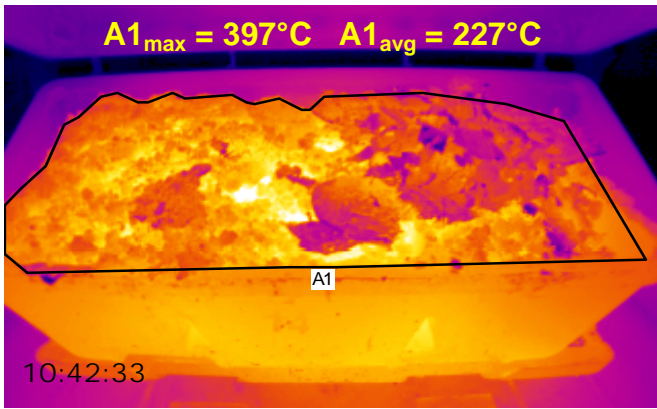
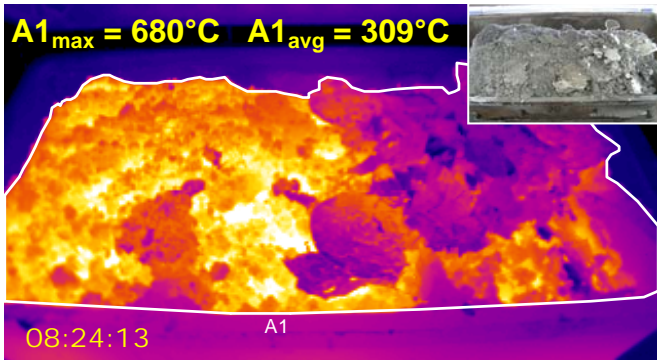
# Abkühlversuche mit Al-Krätze



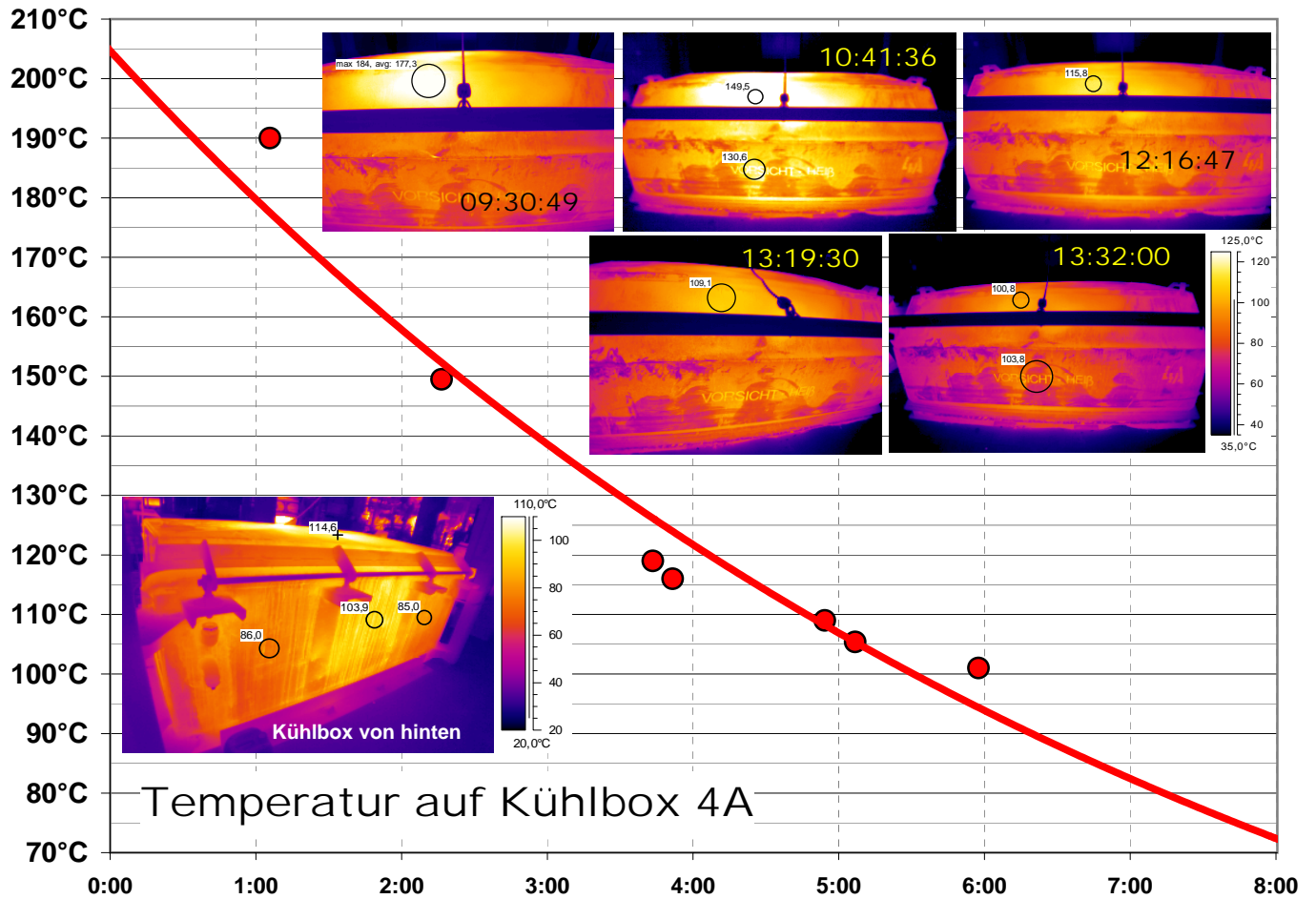
Sofort nach dem Abkrätzen steigt die Temperatur an, weil Sauerstoff hinzukommt



# Kühlbox 4A - Kübel 14 (Krätze vom Ofen 71)



# Optimierung des Kippzeitpunktes in den Container



Wird zu früh gekippt, brennt es im 40 m<sup>3</sup> Container

